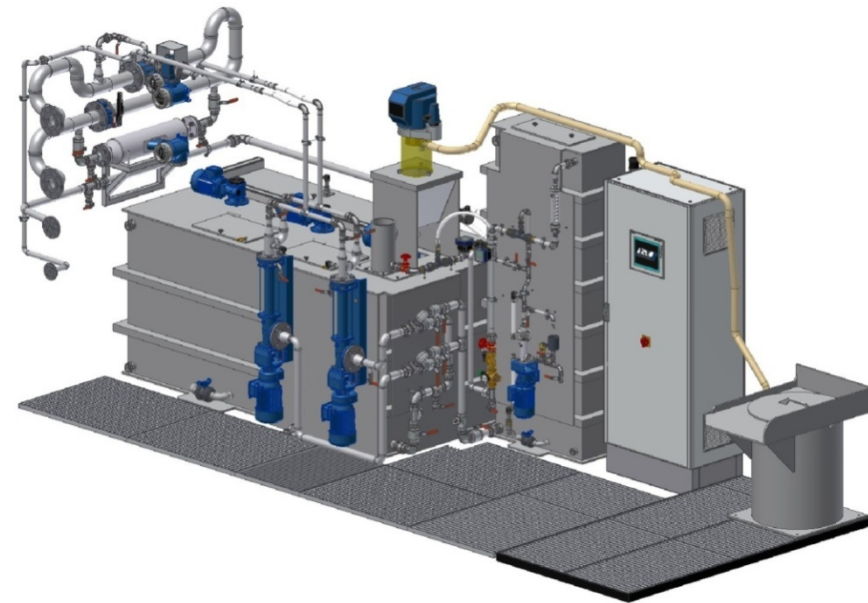


ITE AutoFlock 3000

Product features

The ITE AutoFlock 3000 flocculation unit is installed in a 20ft standard container and is a modular compact system for treating and applying polymer solutions. Due to the integrated control system, the preparation and dosing process may take place automatically. An optional feature provides the possibility of referring to a solids dependent dosing mechanism. Based on the data obtained from measuring both volume flow rate and suspension density, the polymer solution is injected into the process in an amount proportionate to the respective solid matter. Such a system will positively exclude unwanted over- and/or underdosing.



The AutoFlock 3000 flocculation unit is equipped with

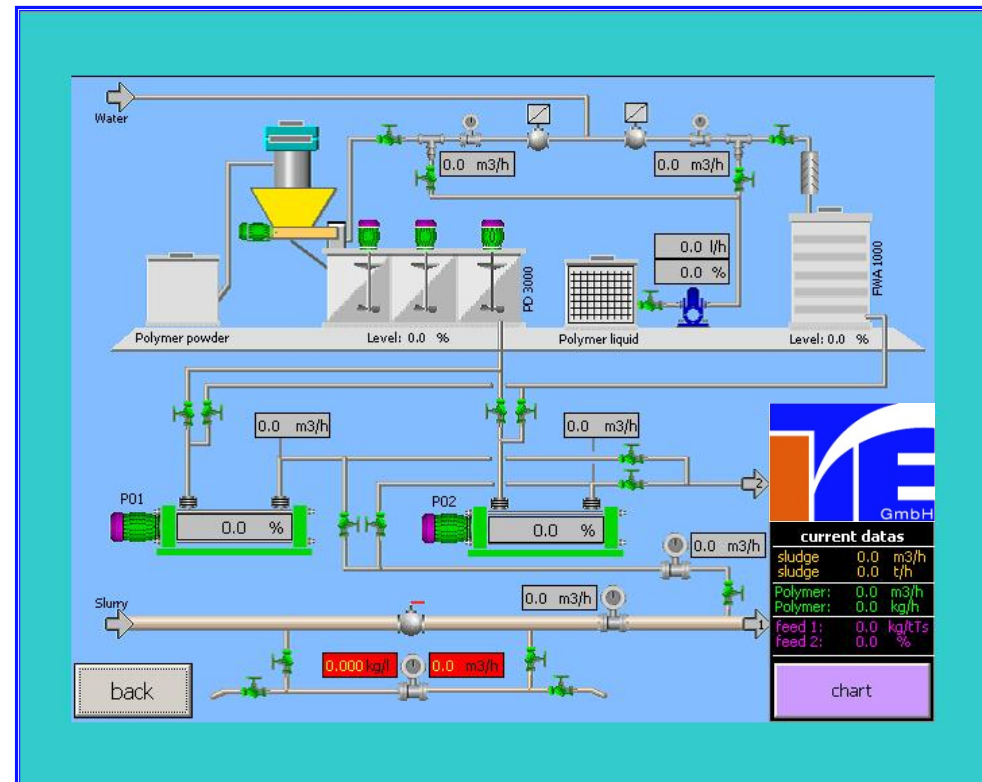
- a **liquid polymer unit** for ensuring the automatic and continuous preparation of a homogeneously mixed concentrated polymer solution with exact concentration parameters in a two-chamber process (product quantity: 1000 l/h)
- a **powder/liquid polymer unit** for ensuring the automatic and continuous preparation of a homogeneously mixed concentrated polymer solution with exact concentration parameters in a three-chamber process (product quantity: 3000 l/h)
- a programmable logic controller with touch screen panel for automatic operation
- flow meters and pressure sensors
- two dosing pumps for transporting the premixed flocculant to the injection point

Transport dimensions

- Length: 6,050 mm
- Width: 2,440 mm
- Height: 2,590 mm
- Weight: approx. 4000 kg

Technical specifications

- **Product quantity**
 - Liquid polymer unit: 1000 l/h
 - Powder/liquid polymer unit: 3000 l/h
- **Connections**
 - Inlet and outlet of slurry line: DN 80
 - Water supply: DN 40
 - Outlet/flush connection for dosing line 2: DN 25
- **Power supply**
 - Entire unit: approx. 13 kW
- **Dosing pumps**
 - Type: positive-displacement pumps
 - Quantity: 2 units
 - Output capacity: 260-2600 l/h each



Illus.: Touch screen panel with status bar